

***Te wheke* means
octopus in te reo Māori.
This book will help you
become an adventurer
like te wheke and explore
the treasures in our
gallery spaces!**

**Student
workbook**

**CHRISTCHURCH
ART GALLERY
TE PUNA O
WAIWHETŪ**

1

Hawaiki Tautau Atu, Hawaiki Tautau Mai: A Distance Draws Near



We are the Small Axe

Tapa is a type of art made on barkcloth. It can be found all over Oceania – each island has its own style and name for it.

This tapa is made by two artists – Robin White and Ruha Fifita. They have used a mix of traditional and modern designs.

Look carefully but don't touch.

Can you find... a jandal, a jar, an eel, a bird?

What other images and patterns do you see?

Robin White says, "The past is an anchor."

What do you think she means?

Robin White and Ruha Fifita

***We are the Small Axe* 2015**

Natural dyes and pigments on barkcloth

Collection of Christchurch Art Gallery

Te Puna o Waiwheū, purchased 2019

Tapa designs often include images and patterns that are important to the people of each Pacific island. **What images and patterns could you use to show who you are and what's important to you? Draw your ideas below.**

Can you find the three other tapa artworks in this room?

The Manu Lounge

Edith Amituanai has taken many photographs inside the homes of her friends and family. She is interested in how homes tell a story about who we are and what is important to us. This is the house of one of the Manu Samoa rugby team members.

The rooms in our house tell stories about who we are. **Write down three things you see in the room that tell you something about the family who lives here.**

1. _____

2. _____

3. _____



Edith Amituanai
The Manu Lounge 2006
Archival pigment print
Collection of Christchurch Art Gallery
Te Puna o Waiwhetū, purchased 2019

What is your favourite room at home? Why? _____

Draw your bedroom – include the things that tell stories about you.



Robyn Kahukiwa
My Ancestors Are Always With Me 1995
 Oil, enamel and alkyd on canvas
 Collection of Christchurch Art Gallery
 Te Puna o Waiwhetū, purchased 2019

My Ancestors Are Always With Me

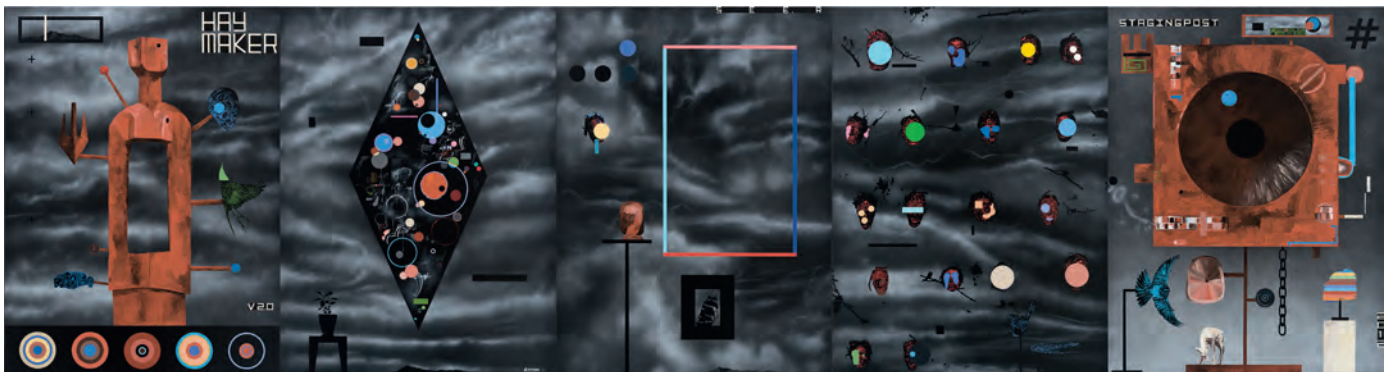
Look carefully – can you see the children in this painting by Robyn Kahukiwa? They are protected between the legs of their parents. In traditional Māori whakairo (carving), the way these figures are positioned represents whakapapa (genealogy, or family history).

How many figures can you see in this work? _____

Look at the title of this painting.
 What do you think the painting is about?

Look at the colours the artist used. Why do you think she chose them?

What else do you notice about this work?

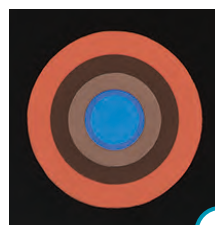
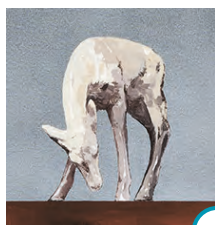
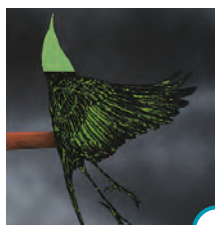
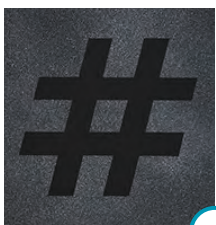


The Haymaker Series I-V

This mahi toi by Shane Cotton is massive! See the dark space in the background? It represents te pito o te ao, the centre of the Māori universe.

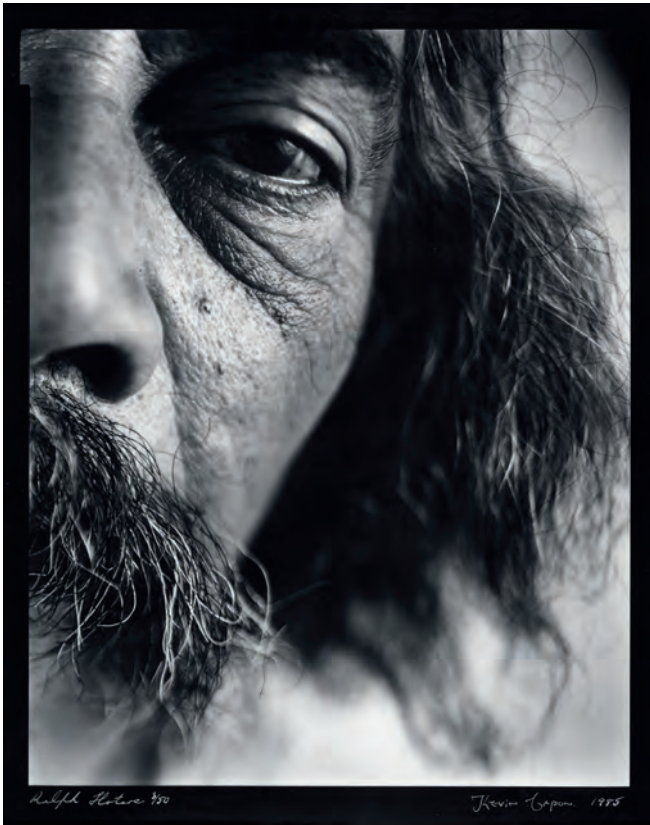
There are a lot of drawings and symbols in this painting that have meaning to the artist. Can you find...

Shane Cotton
The Haymaker Series I-V 2012
 Acrylic on linen
 Collections of Christchurch
 Art Gallery Te Puna o Waiwhetū
 and Dunedin Public Art Gallery
 (with funding from Dunedin
 Public Art Gallery Society).
 Jointly purchased 2015



3

Kanohi ki te Kanohi: Face to Face



Ralph Hotere

Have you ever heard the saying *a picture is worth a thousand words*? When we look at a picture we start forming a story in our minds about what we are seeing.

What do you imagine is the story behind this photograph of artist Ralph Hotere?

Why do you think the artist has taken the photograph so close up?

Kevin Capon
Ralph Hotere 1985
Photograph
Collection of Christchurch Art Gallery Te Puna o Waiwhetū,
presented by the Friends of the Robert McDougall Art Gallery

Look around this space and choose another portrait that you find interesting.

Who made the artwork? (artist)

What is it called? (title)

When was it made? (date) _____

What is it made of? (media)

What do you find interesting about this work?

Has the artist given us any clues to tell us about the person in the work?

Sketch the work here.

4 Ko Ēnei Taurira Ātaahua: These Beautiful Patterns

Stanford Family Pātaka Cabinet

John Henry Menzies was a Pākehā artist and sheep farmer who was inspired by Māori whakairo (carving) and architecture. He made many pieces of beautifully carved furniture and albums of paintings and prints from his studies of whakairo and kōwhaiwhai (rafter patterns).

Look carefully (but don't touch!)
How many tiki can you find?

John Henry Menzies *Stanford Family Pātaka Cabinet* c. 1895. Wood (American walnut, kauri), pāua shell. Collections of Akaroa Museum (with assistance from the Friends of Akaroa Museum) and Christchurch Art Gallery Te Puna o Waiwhetū; jointly purchased 2019

Each pattern has a name and meaning.
Which of these patterns can you find on the cabinet?



Puhoro
Stormy weather
Speed, swiftness



Koru
Spiral motif
New life/beginnings, links to ancestors/genealogy



Mangōpare
Hammerhead shark
Strength, courage and power



Kaokao
Armpits
Strength of a warrior



Did you know? 'Cultural appropriation' is when meaningful elements of one culture are used by another, often for decoration but without asking for permission or guidance.

In toi Māori (Māori art), different figures, patterns and symbols tell histories and stories and have deep meaning to the artist and their whānau (family) and iwi (tribe). Even though Menzies admired and respected toi Māori, these days most people think that only Māori have the right to use these images and patterns to tell their stories.

5

I Tawhiti Rā Anō: From Distant Shores

Find these two paintings of Te Onepoto / Taylors Mistake, a beach just over the hill from Sumner.

These artists have different painting styles. What do you notice about the way that each work has been painted?



E. Rosa Sawtell
Taylor's Mistake c. 1925
Watercolour
Collection of Christchurch Art Gallery
Te Puna o Waiwhetū, gift of Fiona and
Bryony Macmillan, 2000



Bill Sutton
Untitled [Te Onepoto/Taylors Mistake] 1957
Oil on canvas
Collection of Christchurch Art Gallery
Te Puna o Waiwhetū, William A. Sutton
bequest, 2000

A lot of artists liked painting this beach – can you find the other two artworks in this room that show Taylors Mistake? **Write down the artists' names.**

1. _____ 2. _____

Draw a place you have been on holiday. Were there trees? Hills? A beach or river? Did you stay in a house or a tent? Include all the details that you can remember.

Did you know? Taylors Mistake was first called Te Onepoto – it means *short beach*.

6

He Ara: Pathways

Te Whare Pora

Te Whare Pora means ‘the house of weaving’, traditionally a special building where novice weavers were taught. A group of four artists called the Mata Aho Collective made this work out of a surprising material – you might even have one at home!

Mata Aho Collective
Te Whare Pora 2012.
Faux mink blankets, thread
Victoria University of Wellington Art Collection, purchased 2019



What is it?

Why do you think they have chosen this material?

What does the work make you think about?

Faux mink blankets are made overseas from synthetic materials, and are designed to appeal to specific markets through the use of identifiable patterns like kowhaiwhai. They can be found in homes and marae throughout Aotearoa and make people think of warm cosy spaces.

**Do you have a mink blanket at home?
What colours or designs does it have on it?**

The artists have chosen to use black blankets rather than patterned ones. What do you notice about the way that the pieces have been arranged? **Draw the pattern below.**



Take Heart

Look carefully, can you see a map of the world? Where is Aotearoa?

This work is made out of gold chocolate wrappers and is a 'cordiform projection' – a heart-shaped map that's been around since about 1500. Most maps show the North Pole at the top, but this one has the South Pole at the top instead. Usually Aotearoa is tucked away in the bottom corner of a map, but here it is at the top. It makes us think about our place in the world a bit differently!

Ruth Watson

Take Heart 1999

Chocolate wrapping paper, pins

Collection of Christchurch Art Gallery

Te Puna o Waiwhetū, purchased 1999

Draw your own map of the world.

What would you want people to think about?

Did you know? World maps often miss off Aotearoa because it is so small! Prime Minister Jacinda Ardern and comedian Rhys Darby started **#getNZonthemap**.



Lick

This video was filmed in Tuvalu, a small country in the Pacific Ocean. The people there are worried that the sea is rising because of climate change, and one day soon it might reach their homes.

Angela Tiatia

Lick 2015

Single-channel HD video, colour, sound, duration 6 min 33 sec

Collection of Christchurch Art Gallery

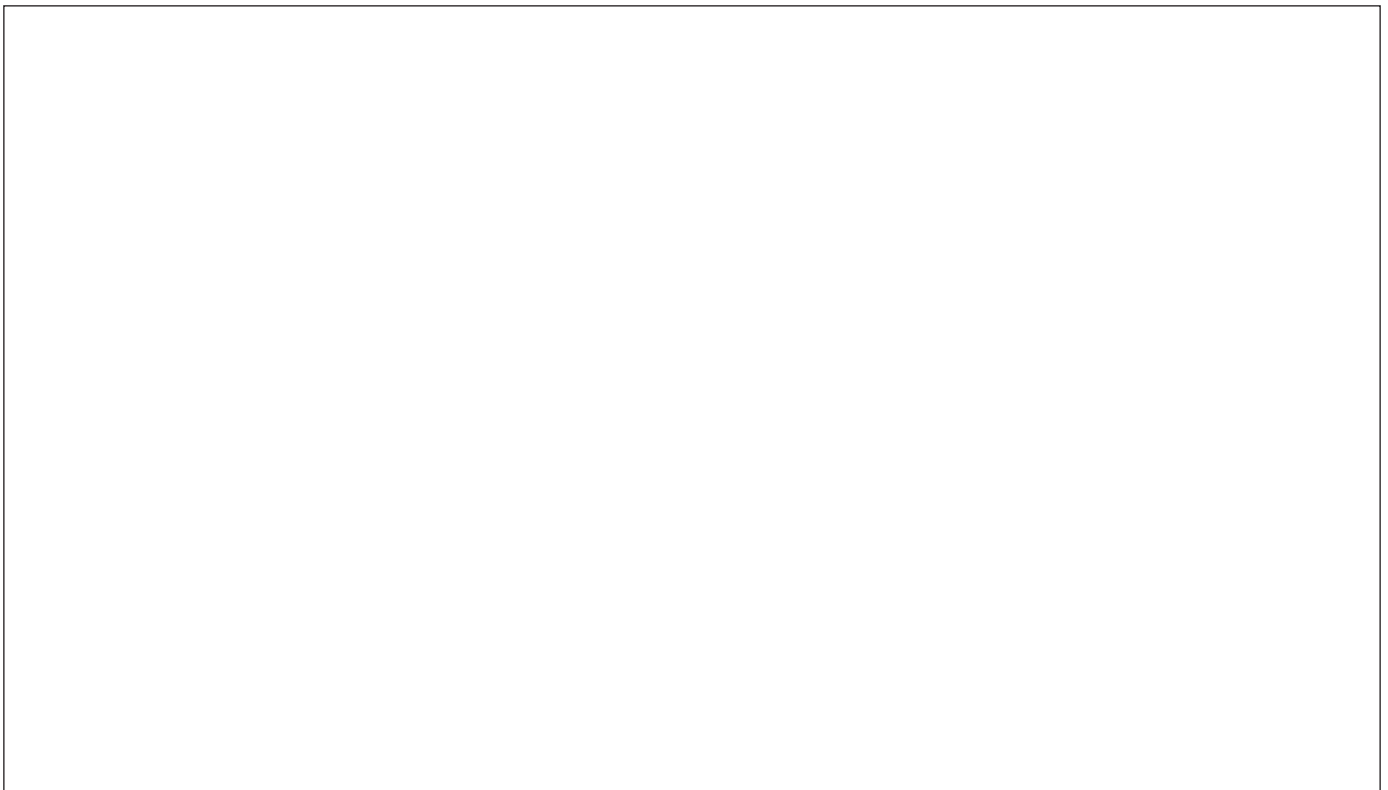
Te Puna o Waiwhetū, purchased 2018

The figure in this work is the artist. What do you notice about how she is standing?

Listen carefully. What sounds can you hear?

Why do you think this work is called *Lick*?

Look carefully. Did you notice any fish swimming by? Draw them below.





'etu iti

Artist Ani O'Neill had the help of local school children to create this beautiful mahi toi. She wants us to think about the importance of community and what we can achieve when we work together. A community is a group of people who share the same environment, interests, beliefs and needs – like your school, neighbourhood or church.

Ani O'Neill
'etu iti 2006

Kikau (coconut midrib), feathers, raffia, shells, beads, sequins, videotape, recycled plastic, nylon yarn, wire
Collection of Christchurch Art Gallery
Te Puna o Waiwhetū, purchased 2018

What community groups do you belong to?
What projects have you worked on with others?

The artist has used a range of everyday materials to create this work. What materials can you see?
Why do you think she has chosen those materials?

Which is your favourite star in this work?
Draw it below.

Did you know? 'Etu iti means *little stars* in Cook Islands Māori.



Mother

Joe Sheehan found a crushed up milk bottle and a large stone when he was walking on the beach one day. He decided to carve a perfect copy of the bottle out of the stone. It makes us think about what really happens to our rubbish when we throw it away.

Joe Sheehan
Mother 2008
Greywacke stone
Collection of Christchurch Art Gallery
Te Puna o Waiwhetū, purchased 2008

Why do you think he has called it *Mother*?

What are three things we can do to help protect our environment?

1. _____
2. _____
3. _____

The Fall (#2)

The sand used to create this work was collected from 24 different beaches around Aotearoa on parts of the coast where erosion puts the shoreline at risk. The artist wants us to pay attention and think about how our actions affect nature.

What do you notice about the different strings of sand?

How do you think the artist stuck the sand on?

Can you find the sand from New Brighton?
Check the map to the right of the case to give you a clue.



Melissa Macleod
The Fall (#2) 2019–20
Nylon, steel, sand from 24 sites of erosion-prone New Zealand coasts
Courtesy of the artist

Reflect

What was your favourite artwork in the Gallery today? Why?

Imagine you have been asked to make an artwork for Christchurch Art Gallery.

Think about what ideas or story you would represent within it. What would you make?

Describe or draw some of the features of the work below and write a label for your artwork.



Whakatakina te Waiwhetū means to pursue the many stars reflected in the sacred spring. Waiwhetū is also part of the Gallery's name because we are located on a sacred spring.

Stars have been used by navigators for centuries. This work acknowledges the early explorers and the idea of whakapapa (genealogy, or family histories).

Can you find:

A tohorā (whale)

This remembers the ancestor Paikea, whose descendant Tahu Pōtiki provides Ngāi Tahu with their tribal name.

A maunga (mountain)

This is Aoraki, an important ancestor of Ngāi Tahu.

Toka (boulders)

These represent the Moeraki boulders and the story of the arrival of Arai Te Uru, an ancestral waka.

Kelcy Taratoa

Whakatakina te Waiwhetū 2020

Acrylic paint on wall

Commissioned by Christchurch Art Gallery

Te Puna o Waiwhetū

